



TABLE OF CONTENTS

	PAGE
Introduction	1
By the Numbers	2
Research Award Highlights	3
Publication Highlights	5
Research Training	6
Advancing Science Through Korea-U.S. Collaborations	6
Honors and Recognitions External	7
Honors and Recognitions Internal	8
Research Business Development	9
Tech Transfer and New Ventures	9
New Research Centers at Rutgers Health	10
Facilities Updates	11
Rutgers and Health System Partnership	11
Philanthropy	12
Our Team	12

INTRODUCTION

Dear Colleagues,

We are excited to share this snapshot of Rutgers Health research activities for fiscal year 2025 (FY25). This year continues to be marked by impressive growth with research and sponsored program awards increasing by nearly 8% to \$608 million and a major area of growth in clinical trials. We have continued to expand opportunities for our patients to participate in promising clinical trials, in FY25 offering a total of 323 new and 676 actively recruiting trials in various therapeutic areas. In FY25, Rutgers Health continued building on a decade of previous successes. Among these achievements is the establishment of two new research centers.

First, the Center for Biomedical Informatics and Health Artificial Intelligence (BMIHAI) is designed to position Rutgers as a national leader in computational medicine and health AI by uniting and expanding our existing strengths across the diverse fields of biomedical and health informatics. This transformative and collaborative initiative, seeded with \$3.75 million from the Rutgers University Academic Affairs Office through the Roadmaps for Collective Academic Excellence initiative, will be housed within the Rutgers Institute for Health, Health Care Policy, and Aging Research (IFH). Leslie Lenert, an internationally recognized informatics expert, has been named the inaugural director of the Center. By harnessing the power of artificial intelligence, BMIHAI will transform the way we conduct research and significantly enhance our ability to provide personalized, data-driven care.

Second, the Center for Climate, Health, and Healthcare was established in partnership with RWJBarnabas Health to address climate change through research, education, and programmatic activities specifically from the perspectives of health and healthcare. This comprehensive, interdisciplinary Center, also housed within IFH, is on a mission to improve the health and healthcare of people and communities in New Jersey, nationally, and globally.

Rutgers Global, in collaboration with Rutgers Health, is expanding its strategic research engagement with South Korea through the Korea-U.S. Research & Development (R&D) Collaborations initiative (for more information, see page 6). This effort builds on multiple other ongoing international partnerships to promote and build biomedical and health sciences collaborations with Rutgers researchers.

Some of our renowned research leaders received significant honors this year as well. Dr. Shawna Hudson was elected to the National Academy of Medicine for her seminal work to address vital U.S. health system implementation challenges for vulnerable populations. Dr. Antonina Mitrofanova was honored with the U.S. government's highest recognition for exceptional early-career scientists and engineers, the Presidential Early Career Award for Scientists and Engineers. These are just two of our shining stars (for more information, see page 7).

As we look to the future, our commitment to advancing research and innovation remains at the forefront of our academic mission as highlighted in the Rutgers Health strategic plan. We are honored to continue this important work together and look forward to supporting our collective efforts to advance health through research and discovery in the coming year and beyond. Together, as one Rutgers Health, we are building toward our aspiration to be among the nation's top academic health centers.

*Kathleen W. Scotto, PhD
Vice Chancellor for Research
and Research Training*



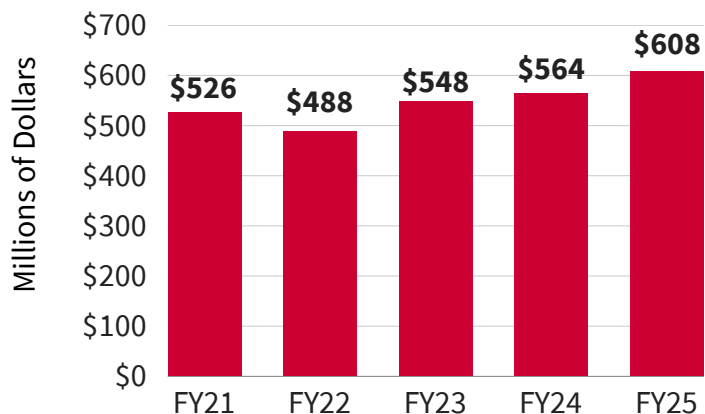
*M. Bishr Omary, MD, PhD
Senior Vice Chancellor for
Academic Affairs and Research*



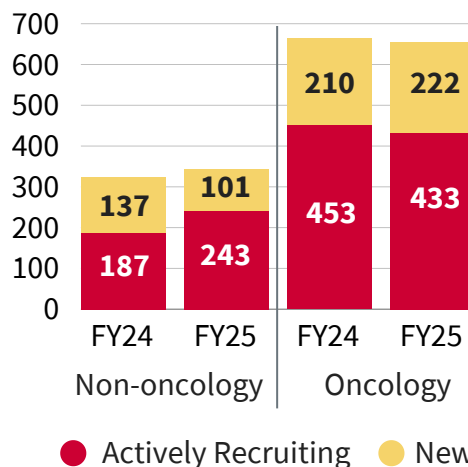
*Brian L. Strom, MD, MPH
Chancellor and Executive
Vice President of Health Affairs*



**Sponsored Research Awards
FY21 – FY25**



**Number of Clinical Trials
FY24 – FY25***



*In a given FY, some 'new' trials may turn to 'actively recruiting'

FY25

\$276M
(\$289M)
Total Federal

\$209M
(\$213M)
NIH only

\$133M
(\$128M)
State

\$179M
(\$120M)
Corporate

\$21M
(\$27M)
Other

Publications

3,531
(3,148)

New Training Awards[†]

NIH \$9M
(\$11.5M)

Non-NIH \$1.2M
(\$5.2M)

MS students

571
(514)

PhD students

361
(298)

Post-docs

238
(244)

90
(72)
Disclosures

83
(49)
Patents Issued

13
(20)
License and Option Agreements

\$5M
(\$7M)
Licensing Revenue

FY24 numbers shown in parentheses; new training awards[†] are full project value

RESEARCH AWARD HIGHLIGHTS*

Research Projects

Institute for Nicotine and Tobacco Studies

Olivia Wackowski and **Michelle Jeong** received \$3.9 million over 4 years from the National Institutes of Health (NIH) to assess how “natural” descriptors and imagery on cigar packaging influence young adults’ attention, perceptions, and use intentions.

Mary Hrywna and Amanda Kong (Wake Forest University) received \$3.4 million over 4 years from the NIH to study how retail practices, products, and neighborhood factors influence underage tobacco sales and support stronger Tobacco 21 enforcement.

Robert Wood Johnson Medical School

Avram J. Holmes and B.T. Thomas Yeo (National University of Singapore) received \$3.8 million over 4 years from the NIH to examine links between brain connectivity and symptom changes over time to identify behavioral, cellular, and genetic drivers of mental illness.

David H. Zald received \$3.3 million over 5 years from the NIH to study how individuals manage temptations and identify factors that shape self-control across mental health conditions.

New Jersey Medical School

Padmini Salgame, **John R. Chan**, and Rodrigo Ribeiro-Rodrigues (Federal University of Espirito Santo) received \$3.7 million over 5 years from the NIH to compare immune responses in individuals resistant and susceptible to TB to identify protection pathways and support vaccine development.

Yingda L. Xie and Cameron A. Myhrvold (Princeton University) received \$3.5 million over 5 years from the NIH to develop a CRISPR-based test for faster and more accurate diagnosis of drug-resistant TB.

Junichi Sadoshima received \$3 million over 4 years from the NIH to study how oxidative stress leads to heart failure and to improve treatments that restore calcium balance and support heart function.

School of Public Health

Cui Yang, **Mackey R. Friedman**, and **Henry F. Raymond** received \$3.6 million over 5 years from the NIH to study how social networks and interpersonal factors shape health behaviors and cognitive outcomes in aging Black and Latino sexual minority men.

Michael Anestis received \$3 million over 2 years from the State of New Jersey to support the New Jersey Gun Violence Research Center in advancing research to prevent gun violence and inform policy.

Environmental and Occupational Health Sciences Institute

Philip Demokritou and Michael P. Verzi (Rutgers New Brunswick) received \$3.2 million over 5 years from the NIH to study how ingested micro-nanoplastics impact human health.

Ernest Mario School of Pharmacy

Shuo Xiao and So-Youn Kim (University of Nebraska Medical Center) received \$3.1 million over 5 years from the NIH to study how chemotherapy affects ovarian function and to develop therapies that protect reproductive health in young female cancer patients.



Clinical Trials

Cancer Institute of New Jersey

Sanjay Goel received \$23.1 million over 5 years from Roche-Syneos Health to study the safety and effectiveness of a new investigational therapy in patients with advanced solid tumors.



Sarah Weiss received \$14.7 million over 5 years from Regeneron Pharmaceuticals, Inc. to evaluate the combination of two immunotherapies compared to standard therapy in patients with melanoma.



Sarah Weiss received \$7.5 million over 5 years from Regeneron Pharmaceuticals, Inc. to evaluate two fixed-dose combinations of cancer immunotherapy drugs in patients with melanoma.

Joanna Rhodes received \$5.8 million over 5 years from AstraZeneca Pharmaceuticals LP to evaluate the safety and early effectiveness of a new investigational therapy in patients with mature B-cell malignancies.



Sanjay Goel received \$5.3 million over 5 years from GlaxoSmithKline to evaluate the safety and early activity of a new investigational therapy in patients with advanced solid tumors.

Ogechukwu Egni received \$4.8 million over 5 years from Incyte Corporation to evaluate the effectiveness of a new therapy combined with corticosteroids as an initial treatment for patients with moderate or severe chronic graft-versus-host disease.



Missak Haigentz received \$4.6 million over 5 years from Amgen, Inc. to compare the effectiveness of a new immunotherapy versus standard immunotherapy alone to improve survival and treatment outcomes in patients with extensive-stage small-cell lung cancer.



Sanjay Goel received \$4.0 million over 5 years from Genentech, Inc. to evaluate the safety, dosing, and early activity of a new investigational therapy alone and in combination with immunotherapy in patients with advanced or metastatic solid tumors.

Sanjay Goel received \$3.9 million over 5 years from Merck Sharp & Dohme LLC to assess the safety, dosing, and pharmacokinetics of a new investigational therapy alone and in combination with immunotherapy in patients with advanced or metastatic solid tumors.

Sanjay Goel received \$3.8 million over 5 years from Kura Oncology, Inc. to evaluate the safety, dosing, and early anti-tumor activity of a new investigational therapy alone and in combination with other treatments in patients with advanced solid tumors.

Equipment

New Jersey Medical School

Hong Li received \$1.1 million from the NIH to purchase a Bruker timsTOF HT mass spectrometer, coupled with an Evosep One HPLC system, to advance high-throughput proteomics research.



Bhupinder Singh received \$336,200 from the NIH to purchase an automated watering system for the rodent housing program in the Cancer Center vivarium.



Robert Wood Johnson Medical School

Smita Patel received \$254,355 from the NIH to purchase a high-precision Refeyn Two-MP Mass Photometer, to advance single-molecule mass analysis and biomolecular interaction studies.



** Awards greater than \$3M total value (except Equipment); contact principal investigator (PI) pictured*

PUBLICATION HIGHLIGHTS*

Jennifer N Brudno, Marcela V Maus, Christian S Hinrichs. CAR T Cells and T-Cell Therapies for Cancer: A Translational Science Review. **JAMA** 2024

Rachel E Yan, Alba Corman, Lyla Katgara, Xiao Wang, Xinhe Xue, ..., Shridar Ganesan, Eugene Katsevich, Jeffrey P Greenfield, Nadia Dahmane, Neville E Sanjana. Pooled CRISPR Screens with Joint Single-Nucleus Chromatin Accessibility and Transcriptome Profiling. **Nat Biotechnol** 2024

Tabassome Simon, Brandon M Herbert, Maria Mori Brooks, Shaun G Goodman, John H Alexander, ..., Marnie Bertolet, Dean A Fergusson, Andrew M Goldsweig, Paul C Hébert, Jeffrey L Carson; MINT Trial Investigators. Restrictive or Liberal Transfusion Strategy in Patients with Acute Myocardial Infarction and Anemia: 6-Month Mortality in the MINT Trial. **Circulation** 2024

Partho P Sengupta, Damini Dey, Rhodri H Davies, Nicolas Duchateau, Naveena Yanamala. Challenges for Augmenting Intelligence in Cardiac Imaging. **Lancet Digit Health** 2024

Alexander L Cope, Joshua G Schraiber, Matt Pennell. Macroevolutionary Divergence of Gene Expression Driven by Selection on Protein Abundance. **Science** 2025

Sarah A Weiss, Dijana Djureinovic, Wei Wei, Thuy Tran, Matthew Austin, ..., Lucia Jilaveanu, Sarah Goldberg, Veronica Chiang, Peter Forsyth, Harriet M Kluger. Phase II Trial of Pembrolizumab in Combination with Bevacizumab for Untreated Melanoma Brain Metastases. **J Clin Oncol** 2025

Sarah C Rutherford, Hongli Li, Alex F Herrera, Michael LeBlanc, Sairah Ahmed, ..., Brad Kahl, John P Leonard, Sonali M Smith, Jonathan W Friedberg, Andrew M Evens. Nivolumab-AVD Versus Brentuximab Vedotin-AVD in Older Patients with Advanced-Stage Classic Hodgkin Lymphoma Enrolled on S1826. **J Clin Oncol** 2025

Ruby Lin, Jessica C Fields, Rachel Lee, Emily B Rosenfeld, Emily E Daggett, Ruchira Sharma, Cande V Ananth. Hospitalization for Cardiovascular Disease in the Year After Delivery of Twin Pregnancies. **Eur Heart J** 2025

Kenichi Sakamoto, Mary A Butera, Chunxue Zhou, Giulia Maurizi, Bandy Chen, ..., Donald A Morgan, Kamal Rahmouni, Gary J Schwartz, Azeddine Tahiri, Christoph Buettner. Overnutrition Causes Insulin Resistance and Metabolic Disorder Through Increased Sympathetic Nervous System Activity. **Cell Metab** 2025

Barry E Levin, Nori Geary, Thomas A Lutz. The (Dys)Regulation of Energy Storage in Obesity. **Physiol Rev** 2025

Saum Ghodoussipour, Trinity Bivalacqua, Richard T Bryan, Roger Li, M Carmen Mir, Joan Palou, Sarah P Psutka, Debasish Sundi, Mark D Tyson, Brant A Inman. A Systematic Review of Novel Intravesical Approaches for the Treatment of Patients with Non-muscle-invasive Bladder Cancer. **Eur Urol** 2025

Naomi Q P Tan, Renu S Nargund, Elisa E Douglas, Maria A Lopez-Olivo, Paul J Resong, Sayaka Ishizawa, Sara Nofal, Kate Krause, Robert J Volk, Iakovos Toumazis. Acceptability And Perceptions of Personalised Risk-Based Cancer Screening Among Health-Care Professionals and the General Public: A Systematic Review and Meta-Analysis. **Lancet Public Health** 2025

Micah T Prochaska, Gerard T Portela, Maria Mori Brooks, Dean A Fergusson, Paul C Hébert, ..., Rajesh Gupta, Sunil V Rao, Luiz Eduardo Fonteles Ritt, Tabassome Simon, Jeffrey L Carson. Transfusion Strategy Effect on Quality of Life in Patients with Myocardial Infarction and Anemia: A Secondary Analysis of the MINT Randomized Clinical Trial. **JAMA Intern Med** 2025

**Includes original research articles, reviews, and clinical guidelines from the top 125 journals listed by Journal Citation Reports with first and/or last author(s) affiliated with RBHS/Rutgers Health [2024 Journal Impact Factor of 23.3 or more]*

RESEARCH TRAINING

Two new training awards associated with the New Jersey Alliance for Clinical and Translational Science (NJACTS) were funded in FY25. NJACTS, led by Rutgers with partners including Princeton University, the New Jersey Institute of Technology (NJIT), and RWJBarnabas Health, provides a platform for translational science in New Jersey supported through investments by the NIH Clinical and Translational Science Award (CTSA) Program.

CTSA K12 Career Development Program

Ethan Halm (Robert Wood Johnson Medical School) and **John Chan** (New Jersey Medical School) received \$4.7 million over 5 years from the NIH to support the NJACTS K12 career development program, *Doctors as Valued Learning Partners* (DEVELOP). The program prepares early career faculty for independent careers in translational sciences. Its goal is to train clinicians and scientists with doctoral degrees from diverse backgrounds to become independent investigators advancing clinical and translational research. DEVELOP provides research experience, coursework, professional development, and tailored, multi-disciplinary mentoring.



CTSA T32 Predoctoral Training Program

Kathleen W. Scotto (Robert Wood Johnson Medical School), **Daniel Notterman** (Princeton), and **Antonina Mitrofanova** (School of Health Professions) received \$1.5 million over 5 years from the NIH to support the NJACTS T32 predoctoral training program, *Addressing Societal Challenges with Emerging New Technologies* (ASCENT). The program provides a 2-year training opportunity for predoctoral students from Rutgers, Princeton, and NJIT to build skills in translational science with a focus on cross-disciplinary team research, social skills, and leadership development.

ADVANCING SCIENCE THROUGH KOREA-U.S. COLLABORATIONS

As part of the University's expanding Korea-U.S. engagement strategy in biomedical and health sciences, in June 2025 Rutgers hosted a Symposium on Korea-U.S. R&D Collaborations and Funding Opportunities, bringing together experts from both countries to explore new research partnerships, funding models, and talent exchange. Co-sponsors of the Symposium included: the Korea Institute for Advancement of Technology (KIAT), the Consulate General of the Republic of Korea in New York, Seoul National University, and K-BioX, a non-profit academic organization that supports the exchange of Korean life scientists around the world with more than 14,000 members.



HONORS AND RECOGNITIONS | EXTERNAL



2024 Elected to the National Academy of Medicine

Shawna V. Hudson – Professor and Senior Associate Dean for Population Health Research, Robert Wood Johnson Medical School and Vice Chancellor of Dissemination and Implementation Science, Rutgers Health

For her seminal work to address vital U.S. health system implementation challenges for vulnerable populations.



2024 Elected Fellow of the American Association for the Advancement of Science

Andrew Gow – Professor, Ernest Mario School of Pharmacy

For his distinguished contributions to the field of the chemical biology of reactive nitrogen species, particularly the elucidation of physiological and pathophysiological effects in lung disease.



2024 Bowl of Hygieia Award from the American Pharmacists Association and the New Jersey Pharmacists Association

Joseph A. Barone – Distinguished Professor and Dean, Ernest Mario School of Pharmacy

For his leadership in advancing pharmacy practice, strengthening pharmacy education, and fostering healthier communities by expanding the role of pharmacists in patient care.



2025 Presidential Early Career Award for Scientists and Engineers

Antonina Mitrofanova – Associate Professor of Biomedical and Health Informatics and Associate Dean for Research, Rutgers School of Health Professions

For her groundbreaking work in computational biology and cancer research advancing the understanding of disease mechanisms and transforming treatment strategies.



2025 Educator of the Year Award from the Research & Development Council of New Jersey

Brian L. Strom – Chancellor, Rutgers Health and Executive Vice President of Health Affairs, Rutgers University

For his transformative impact on medical education in the state.



2025 Honorary Doctorate in Science & Engineering from Åbo Akademi University, Finland

M. Bishr Omary – Henry Rutgers Professor, Robert Wood Johnson Medical School and Center for Advanced Biotechnology and Medicine and Senior Vice Chancellor for Academic Affairs and Research, Rutgers University

For his outstanding contributions to biomedical science, his dedication to mentorship and collaboration, and his significant impact on research and education.



2025 Michael McGinnis Leadership Excellence Award from the Interdisciplinary Association for Population Health Science (IAPHS)

Perry N. Halkitis – Distinguished Professor and Dean, Rutgers School of Public Health

For his outstanding accomplishments, commitment, values and contributions that reflect the mission of IAPHS to advance population health science through science, translational activities and mentoring.



2025 Truman Scholar by the Harry S. Truman Scholarship Foundation

Omar Abuattieh – PharmD student, Ernest Mario School of Pharmacy

For his commitment to public service, combined with a breadth and depth of knowledge on the issues his communities face.

HONORS AND RECOGNITIONS | INTERNAL

2024–2025 Rutgers University Faculty Year-End Excellence Awards

Presidential Award for Excellence in Teaching by a Lecturer

Lisa P. Kim – Lecturer, Rutgers School of Health Professions

Presidential Award for Excellence in Teaching

Barbara A. Tafuto – Assistant Professor, Rutgers School of Health Professions

Presidential Fellowship for Teaching Excellence

Stephanie Shiao – Assistant Professor, Rutgers School of Public Health

Board of Trustees Research Fellowship for Scholarly Excellence

Avram J. Holmes – Professor, Robert Wood Johnson Medical School

Board of Trustees Award for Excellence in Research

Jun Wang – Professor, Ernest Mario School of Pharmacy

2024 Rutgers Innovation Awards

Early Career Innovator Award

Pingping Hou – Assistant Professor, Rutgers New Jersey Medical School

Health Sciences/Biomedical Innovation Award

Daniela Staquicini – Associate Professor, Rutgers Cancer Institute of New Jersey

2025 School of Graduate Studies:

Merit and Achievement Awards

Distinguished Scholarly Achievement

Matthew Gabrielle – PhD graduate, Rutgers New Jersey Medical School

Stanley S. Bergen Medal of Excellence

Zakiyah Henry – PhD graduate, Ernest Mario School of Pharmacy

Harvey Waterman Medal of Excellence

Leelabati Biswas – MD/PhD fellow, Rutgers Robert Wood Johnson Medical School

2025 Rutgers Health Chancellor Awards: Research Recognitions*

Excellence in Basic Sciences Research

Early Career Investigator

Mark A. Rossi – Assistant Professor, Robert Wood Johnson Medical School

Alexander Valvezan – Assistant Professor, Robert Wood Johnson Medical School

Established Investigator

Wenwei Hu – Professor, Rutgers Cancer Institute of New Jersey

Excellence in Clinical or Health Sciences Research

Early Career Investigator

Greta A. Bushnell – Assistant Professor, Rutgers School of Public Health

Mid-career Investigator

Mary Hrywna – Associate Professor, Rutgers School of Public Health

Katie D. Recuay – Associate Professor, Rutgers Cancer Institute of New Jersey

Distinguished Innovator

Arash Hatefi – Professor, Ernest Mario School of Pharmacy

2024–2025 Rutgers Research Council Award

Dane Parker – Associate Professor, Rutgers New Jersey Medical School

2024-2025 Cheryl Wall Faculty Fellows

Kathleen Beebe – Clinical Professor, Rutgers New Jersey Medical School

Tameika D. Minor – Assistant Professor, School of Health Professions

2025-2026 Cheryl Wall Faculty Fellows

Aubrey Daniels – Assistant Professor, Rutgers School of Health Professions

Margaret Quinn – Professor, School of Nursing

* For a full listing of the Chancellor Awards, see: <https://rutgershealth.org/chancellor/chancellor-awards>

RESEARCH BUSINESS DEVELOPMENT

The Rutgers Health Research Business Development unit advances scientific discovery through strategic collaborations with global industry, academic, and government partners. FY25 highlights include:

Biomedical Informatics & Health Artificial Intelligence (BMIHAI) Inaugural Symposium: The center held its inaugural symposium, establishing collaborations with Google Health, Oracle, Amazon Web Services (AWS), and the Institute of Electrical and Electronics Engineers (IEEE) to advance Health AI solutions.

Butterfly Point-of-Care Ultrasound (POCUS) Study: Partho Sengupta's inpatient heart failure study using Butterfly iQ+ and iQ3 devices showed over four days reduced hospital stay and 50% cost savings, proving the clinical value of point-of-care ultrasound.

Dental Clinical Trials with Straumann: Georgios Kotsakis led Rutgers' participation in a global clinical trial funded by Straumann to test next-gen dental implants, reinforcing Rutgers' leadership in dental research.

RUHealthHack Innovation Challenge: Jay Naik and Naveena Yanamala led a 48-hour hackathon generating over 30 health tech prototypes. Industry supporters included Microsoft, Oracle, AWS, and Nokia Bell Labs.

United Kingdom (UK) HealthTech Engagement: Rutgers hosted two summits with the Association of British HealthTech Industries (ABHI) connecting with over 20 UK-based health tech companies. These meetings positioned Rutgers as a key U.S. collaborator, leading to partnerships across cardiovascular, mental, and women's health.

Virtual Asthma Trial with AstraZeneca: Reynold A. Panettieri led a phase III virtual trial testing Airsupra, showing a 44% drop in severe asthma attacks, marking progress in digital respiratory care.

TECH TRANSFER AND NEW VENTURES

Danielle Dick, Director of Rutgers Addiction Research Center and Professor of Psychiatry at Robert Wood Johnson Medical School, co-founded Thrive Genetics with James Piacentino to commercialize the Thrive Comprehensive Addiction Risk Evaluation System (CARES). The platform builds on over 20 years of NIH-funded research that combines genomic, behavioral, and environmental data. It provides personalized addiction risk profiles, prevention strategies, treatment guidance, and recovery support for individual care, veteran services, workplace wellness, and responsible gaming sectors.



Luciano D'Adamio, Professor at New Jersey Medical School, co-founded NanoNewron Inc. to develop a novel nanobody therapy targeting TNF- α in Alzheimer's disease. The therapy uses a proprietary platform to cross the blood-brain barrier and inhibit TNF- α in the brain to prevent early synaptic dysfunction. NanoNewron is seeking FDA feedback and NIH phase II Small Business Technology Transfer (STTR) funding to advance clinical development. The technology may also be applicable to other TNF- α -driven brain disorders.

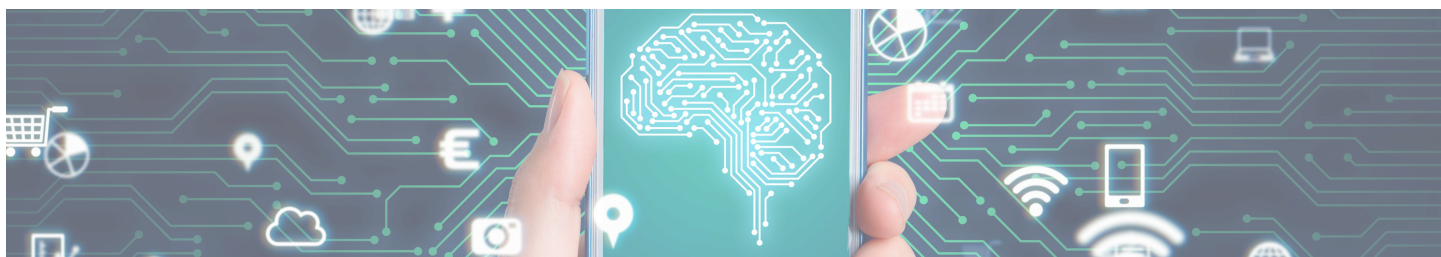


Rutgers Health researchers can submit Innovation Disclosures <https://research.rutgers.edu/faculty-staff/inventions-commercialization/submitting-invention-disclosures>. For questions, email innovate@research.rutgers.edu.

NEW RESEARCH CENTERS AT RUTGERS HEALTH

Center for Biomedical Informatics and Health Artificial Intelligence (BMIHAI)

Rutgers Health launched the Center for Biomedical Informatics and Health Artificial Intelligence (BMIHAI) in October 2024 to position the university as a national leader in computational medicine and health AI. Launched by **Tobias Gerhard**, **David Foran**, **Antonina Mitrofanova**, and **Evan Johnson**, the Center is housed at the **Rutgers Institute for Health, Health Care Policy, and Aging Research**. Supported by \$3.75 million from the Rutgers University Roadmaps for Collective Academic Excellence initiative, BMIHAI brings together expertise in bioinformatics, clinical informatics, public health informatics, and health AI. Its primary focus is on workforce training, building integrated data infrastructure, collaborative AI-based research, and faculty recruitment to enhance Rutgers' impact in biomedical and health informatics.



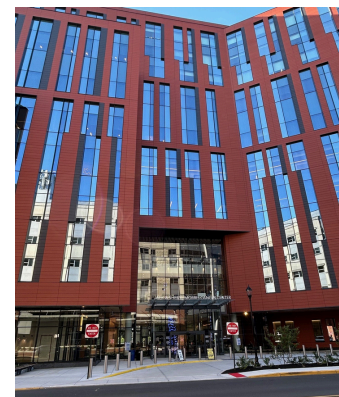
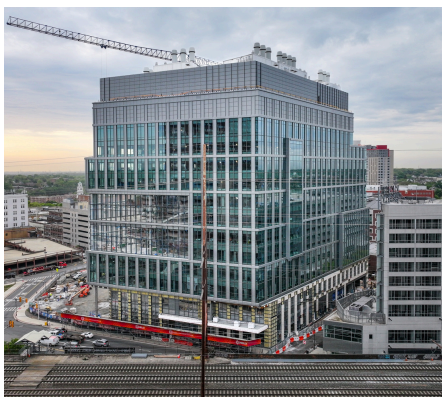
Center for Climate, Health, and Healthcare

Rutgers Health established the Center for Climate, Health, and Healthcare to study the health effects of climate change through research, education, and action. Led by **Soko Setoguchi** and **Glenn Miller** and developed in partnership with **RWJBarnabas Health**, the Center is based at the **Rutgers Institute for Health, Health Care Policy, and Aging Research**. It unites clinical, academic, and community partners to develop climate-resilient healthcare systems and reduce health disparities. The Center launched a Geospatial Data Core to assist researchers working on healthcare-related emissions and population health, positioning Rutgers as a leader in climate and health strategies.



FACILITIES UPDATES

The **Rutgers Health Building** (RHB) remains on track for a Spring 2026 opening. Five approved programs focused on research in genomics, neurometabolism, neurotechnology, addiction, and translational medicine will be housed in the facility, with additional programs under evaluation later this year. The **Medical Science Building** (MSB) in Newark is preparing final design documents for construction bidding, with renovations to academic space and infrastructure slated to begin in 2026 and research space upgrades planned for a later phase. The **Jack and Sheryl Morris Cancer Center** opened on May 13, 2025. As New Jersey's first freestanding cancer hospital and one of only 13 nationwide, the 12-story, 520,000 sq ft facility integrates inpatient and outpatient care, research, and support services. Its research floor includes lab space for up to 10 translational research teams. The center anchors a \$1.5 billion statewide oncology investment and expands access to clinical trials and advanced treatments.



From left to right: RHB construction, MSB envisioned renovation, and the Jack and Sheryl Morris Cancer Center.

RUTGERS AND HEALTH SYSTEM PARTNERSHIP

Rutgers Health and [RWJBarnabas Health](#) (RWJBH) share a vision to be the premiere health care destination providing patient-centered academic medicine and clinical research in the Mid-Atlantic Region and a national leader in clinical trials. RWJBH is the largest and most comprehensive academic healthcare system in New Jersey, and spans eight counties with 5 million people including 14 hospitals. RWJBH established a centralized research office, the [RWJBH Research Office](#) (RRO), to liaise with the [Clinical Trial Office](#) of Rutgers Health, and to engage with Rutgers research leadership to optimize our partnership's capacity and minimize barriers to catalyze sponsored clinical trials, population health projects, translational research, and outcomes studies. As a major initiative, the RRO is implementing an Institutional Review Committee (IRC) structure to review project feasibility, operational functioning, administrative and regulatory approval, alignment of research proposals with strategic objectives, and collaboration among the clinical service lines and other stakeholders. RWJBH has established clinical service lines to provide integrated, high-quality, patient-centered care across its system to enhance and link patient care with major advancements in clinical and translational research and innovation. The RRO aims to implement central research systems, inventory and tracking of protocols, infrastructure and workflow development, and facilitate study start-up administration. The partnership is also developing opportunities and venues for research collaboration and will highlight findings through joint meetings and press releases.



PHILANTHROPY

In FY25, philanthropic giving to Rutgers Health research priorities totaled \$21M. There were various areas supported this year by both new and existing donors. The Rutgers Center for State Health Policy received \$4.2M in funding from the Robert Wood Johnson Foundation to continue and enhance its work in informing health policy in New Jersey and beyond. The Center's role as an unbiased source remains crucial in providing information for policymaking.

Another area of significant philanthropic funding this year was over \$2.6 million for Alzheimer's Disease research led by **Michal Beeri**, including major donor support for innovative stem cell projects to identify early biomarkers and potential therapeutic targets for the disease. Dr. Beeri leads the Rutgers Brain Health Institute's Krieger Klein Alzheimer's Research Center, the first Center of its kind in New Jersey.

We are grateful to all the generous donors to Rutgers Health who provided important philanthropic support for our research efforts. If you are interested in learning more about the many ways to support research projects or facilities at Rutgers Health, please contact rutgershealthadvancement@rutgersfoundation.org.

OUR TEAM



Bishr Omary
Senior Vice Chancellor for
Academic Affairs and Research



Kathleen W. Scotto
Vice Chancellor for Research and
Research Training & Vice Dean,
School of Graduate Studies



Adrienne Ettinger
Chief of Staff for Research



Shawna V. Hudson
Vice Chancellor for Dissemination
and Implementation Science



Janet Alder
Assistant Vice Chancellor for
Postdoctoral Affairs & Assistant
Dean, School of Graduate Studies



David Foran
Chief Research
Informatics Officer



Najwa Borkadi
Executive Director for Research
Business Development



Neil Grant
Director of Special Projects



Natalie Bruiners
Senior Scientific Writer



Carlos Storck-Martinez
Project Manager



Denisse Caban-Santiago
Executive Assistant



Nancy Frazier
Management Assistant



Office of the Senior Vice Chancellor for Academic Affairs and Research
<https://rutgershealth.org/academic-affairs-research/office-research>

Rutgers, The State University of New Jersey
Stanley S. Bergen Building
65 Bergen Street
Newark, NJ 07107